

TEST REPORT

Applicant: Flashbay Electronics
Address: Building2 ,Jixun Industrial Park ,Xinjiao ,Dong'ao Village ,Shatian Town ,Huiyang District ,Huizhou City , Guangdong Province,P.R.China

The following sample(s) was/were submitted and identified on behalf of the client as:

Sample name: Bluetooth Earphones
Model: Duet/DT
Manufacturer & factory: Flashbay Electronics
Address: Building2 ,Jixun Industrial Park ,Xinjiao ,Dong'ao Village ,Shatian Town ,Huiyang District ,Huizhou City , Guangdong Province,P.R.China

Sample No.: S241022030051
Sample Received Date: 2024-10-24
Testing Period: 2024-10-24~ 2024-12-10

Test Requirement:

As specified by client, to determine the Lead(Pb), Cadmium(Cd), Mercury(Hg), Hexavalent Chromium (Cr(VI)), Polybrominated Biphenyls(PBBs), Polybrominated Diphenyl Ethers(PBDEs), Bis-(2-ethylhexyl) Phthalate (DEHP), Benzyl butyl Phthalate (BBP), Dibutyl Phthalate (DBP) and Diisobutyl Phthalate(DIBP)contents in the submitted sample(s) in accordance with RoHS Directive (EU) 2015/863 amending Annex II to Directive 2011/65/EU.

Conclusion

Pass

Test Result(s): Please refer to the following page(s);

Test Method: Please refer to the following page(s);

Compiled by: Zane. W Reviewed by: Luetta Mo
Approved by: Moy Li Date: 2024-12-11

Sample Description:

No.	Sample name	Description
1	Charging compartment shell	White plastic shell
2		Transparent label
3		Silver metal magnet
4		White leather
5		Silver metal screw
6	Charging case PCBA-TM01-C-V1.2	Green PCB
7		Golden metal plug pin
8		Coil of inductor
9		Magnet core of inductor
10		Tin solder
11		Silver metal shell of type-c interface
12		Gray plastic of type-c interface
13		Metal plug pin of type-c interface
14		Transparent double-sided adhesive
15		Black foam
16		SMD chip
17		SMD audion
18		SMD capacitor
19		SMD resistor
20	Earphone	White plastic shell of shell
21		Silver metal of magnet
22		Cupreous foil of shell
23		Grey mesh cloth with glue
24		Green PCB of PCB
25		Silver metal contact pin of PCB
26		Golden metal stylus of PCB
27		Tin solder of PCB
28		SMD chip of PCB
29		SMD inductor of PCB
30		SMD MIC of PCB
31		SMD resistor of PCB
32		SMD crystal of PCB
33	Earphone speaker	Silver metal shell
34		White mesh cloth with vinyl
35		Green PCB
36		Tin solder
37		Beige colloid
38		Silver metal of magnet
39		Silver metal sheet
40		Black adhesive tape

41	Earphone speaker	Cupreous metal ring
42		Transparent plastic sheet
43		Blue wire jacket
44		White wire jacket
45		Wire core
46	Charging compartment battery	Yellow transparent adhesive tape
47		Transparent double-sided adhesive
48		Green PCB of PCB
49		Tin solder of PCB
50		Silver metal sheet of PCB
51		SMD chip of PCB
52		SMD resistor of PCB
53		SMD capacitor of PCB
54		Red wire jacket
55		Black wire jacket
56	Wire core	
57	Headset battery	Yellow transparent adhesive tape
58		Red wire jacket
59		Black wire jacket
60		Wire core

Test Result(s):
Lead(Pb), Cadmium(Cd), Mercury(Hg), Hexavalent Chromium (Cr(VI)), Polybrominated Biphenyls (PBBs), Polybrominated Diphenyl Ethers(PBDEs)

Part No.	Test Items	XRF Screening Result(mg/kg)	Chemical Test Result(mg/kg)	Conclusion	
1	Pb	BL	/	Pass	
	Cd	BL	/		
	Hg	BL	/		
	Cr	Cr(VI)	BL		/
	Br	PBBs	BL		/
		PBDEs			/
2	Pb	BL	/	Pass	
	Cd	BL	/		
	Hg	BL	/		
	Cr	Cr(VI)	BL		/
	Br	PBBs	BL		/
		PBDEs			/

3	Pb		BL	/	Pass
	Cd		BL	/	
	Hg		BL	/	
	Cr	Cr(VI)	BL	/	
	Br	PBBs	/	/	
PBDEs		/			
4	Pb		BL	/	Pass
	Cd		BL	/	
	Hg		BL	/	
	Cr	Cr(VI)	BL	/	
	Br	PBBs	BL	/	
PBDEs		/			
5	Pb		BL	/	Pass
	Cd		BL	/	
	Hg		BL	/	
	Cr	Cr(VI)	BL	/	
	Br	PBBs	/	/	
PBDEs		/			
6	Pb		BL	/	Pass
	Cd		BL	/	
	Hg		BL	/	
	Cr	Cr(VI)	BL	/	
	Br	PBBs	BL	/	
PBDEs		/			
7	Pb		OL	10723 ^{#1}	Pass
	Cd		IN	7	
	Hg		BL	/	
	Cr	Cr(VI)	IN	N.D.	
	Br	PBBs	/	/	
PBDEs		/			
8	Pb		BL	/	Pass
	Cd		BL	/	
	Hg		BL	/	
	Cr	Cr(VI)	BL	/	
	Br	PBBs	/	/	
PBDEs		/			
9	Pb		BL	/	Pass
	Cd		BL	/	
	Hg		BL	/	
	Cr	Cr(VI)	BL	/	
	Br	PBBs	/	/	
PBDEs		/			

10	Pb		BL	/	Pass
	Cd		BL	/	
	Hg		BL	/	
	Cr	Cr(VI)	BL	/	
	Br	PBBs	/	/	
		PBDEs		/	
11	Pb		BL	/	Pass
	Cd		BL	/	
	Hg		BL	/	
	Cr	Cr(VI)	IN	N.D.	
	Br	PBBs	/	/	
		PBDEs		/	
12	Pb		BL	/	Pass
	Cd		BL	/	
	Hg		BL	/	
	Cr	Cr(VI)	BL	/	
	Br	PBBs	BL	/	
		PBDEs		/	
13	Pb		BL	/	Pass
	Cd		BL	/	
	Hg		BL	/	
	Cr	Cr(VI)	BL	/	
	Br	PBBs	/	/	
		PBDEs		/	
14	Pb		BL	/	Pass
	Cd		BL	/	
	Hg		BL	/	
	Cr	Cr(VI)	BL	/	
	Br	PBBs	BL	/	
		PBDEs		/	
15	Pb		BL	/	Pass
	Cd		BL	/	
	Hg		BL	/	
	Cr	Cr(VI)	BL	/	
	Br	PBBs	BL	/	
		PBDEs		/	
16	Pb		BL	/	Pass
	Cd		BL	/	
	Hg		BL	/	
	Cr	Cr(VI)	BL	/	
	Br	PBBs	BL	/	
		PBDEs		/	

17	Pb		BL	/	Pass
	Cd		BL	/	
	Hg		BL	/	
	Cr	Cr(VI)	BL	/	
	Br	PBBs	BL	/	
		PBDEs		/	
18	Pb		BL	/	Pass
	Cd		BL	/	
	Hg		BL	/	
	Cr	Cr(VI)	BL	/	
	Br	PBBs	BL	/	
		PBDEs		/	
19	Pb		BL	/	Pass
	Cd		BL	/	
	Hg		BL	/	
	Cr	Cr(VI)	BL	/	
	Br	PBBs	BL	/	
		PBDEs		/	
20	Pb		BL	/	Pass
	Cd		BL	/	
	Hg		BL	/	
	Cr	Cr(VI)	BL	/	
	Br	PBBs	BL	/	
		PBDEs		/	
21	Pb		BL	/	Pass
	Cd		BL	/	
	Hg		BL	/	
	Cr	Cr(VI)	BL	/	
	Br	PBBs	/	/	
		PBDEs		/	
22	Pb		BL	/	Pass
	Cd		BL	/	
	Hg		BL	/	
	Cr	Cr(VI)	BL	/	
	Br	PBBs	/	/	
		PBDEs		/	
23	Pb		BL	/	Pass
	Cd		BL	/	
	Hg		BL	/	
	Cr	Cr(VI)	BL	/	
	Br	PBBs	BL	/	
		PBDEs		/	

24	Pb		BL	/	Pass
	Cd		BL	/	
	Hg		BL	/	
	Cr	Cr(VI)	BL	/	
	Br	PBBs	IN	N.D.	
PBDEs		N.D.			
25	Pb		BL	/	Pass
	Cd		BL	/	
	Hg		BL	/	
	Cr	Cr(VI)	IN	N.D.	
	Br	PBBs	/	/	
PBDEs		/			
26	Pb		BL	/	Pass
	Cd		BL	/	
	Hg		BL	/	
	Cr	Cr(VI)	BL	/	
	Br	PBBs	/	/	
PBDEs		/			
27	Pb		IN	119	Pass
	Cd		BL	/	
	Hg		BL	/	
	Cr	Cr(VI)	BL	/	
	Br	PBBs	/	/	
PBDEs		/			
28	Pb		BL	/	Pass
	Cd		BL	/	
	Hg		BL	/	
	Cr	Cr(VI)	BL	/	
	Br	PBBs	BL	/	
PBDEs		/			
29	Pb		BL	/	Pass
	Cd		BL	/	
	Hg		BL	/	
	Cr	Cr(VI)	BL	/	
	Br	PBBs	/	/	
PBDEs		/			
30	Pb		BL	/	Pass
	Cd		BL	/	
	Hg		BL	/	
	Cr	Cr(VI)	BL	/	
	Br	PBBs	BL	/	
PBDEs		/			

31	Pb		BL	/	Pass
	Cd		BL	/	
	Hg		BL	/	
	Cr	Cr(VI)	BL	/	
	Br	PBBs	BL	/	
		PBDEs		/	
32	Pb		BL	/	Pass
	Cd		BL	/	
	Hg		BL	/	
	Cr	Cr(VI)	BL	/	
	Br	PBBs	BL	/	
		PBDEs		/	
33	Pb		BL	/	Pass
	Cd		BL	/	
	Hg		BL	/	
	Cr	Cr(VI)	BL	/	
	Br	PBBs	/	/	
		PBDEs	/	/	
34	Pb		BL	/	Pass
	Cd		BL	/	
	Hg		BL	/	
	Cr	Cr(VI)	BL	/	
	Br	PBBs	BL	/	
		PBDEs		/	
35	Pb		BL	/	Pass
	Cd		BL	/	
	Hg		BL	/	
	Cr	Cr(VI)	BL	/	
	Br	PBBs	IN	N.D.	
		PBDEs		N.D.	
36	Pb		IN	421	Pass
	Cd		BL	/	
	Hg		BL	/	
	Cr	Cr(VI)	BL	/	
	Br	PBBs	/	/	
		PBDEs		/	
37	Pb		BL	/	Pass
	Cd		BL	/	
	Hg		BL	/	
	Cr	Cr(VI)	BL	/	
	Br	PBBs	BL	/	
		PBDEs		/	

38	Pb		BL	/	Pass
	Cd		BL	/	
	Hg		BL	/	
	Cr	Cr(VI)	BL	/	
	Br	PBBs	/	/	
PBDEs		/			
39	Pb		BL	/	Pass
	Cd		BL	/	
	Hg		BL	/	
	Cr	Cr(VI)	IN	N.D.	
	Br	PBBs	/	/	
PBDEs		/			
40	Pb		BL	/	Pass
	Cd		BL	/	
	Hg		BL	/	
	Cr	Cr(VI)	BL	/	
	Br	PBBs	BL	/	
PBDEs		/			
41	Pb		BL	/	Pass
	Cd		BL	/	
	Hg		BL	/	
	Cr	Cr(VI)	BL	/	
	Br	PBBs	/	/	
PBDEs		/			
42	Pb		BL	/	Pass
	Cd		BL	/	
	Hg		BL	/	
	Cr	Cr(VI)	BL	/	
	Br	PBBs	BL	/	
PBDEs		/			
43	Pb		BL	/	Pass
	Cd		BL	/	
	Hg		BL	/	
	Cr	Cr(VI)	BL	/	
	Br	PBBs	BL	/	
PBDEs		/			
44	Pb		BL	/	Pass
	Cd		BL	/	
	Hg		BL	/	
	Cr	Cr(VI)	BL	/	
	Br	PBBs	BL	/	
PBDEs		/			

45	Pb		BL	/	Pass
	Cd		BL	/	
	Hg		BL	/	
	Cr	Cr(VI)	BL	/	
	Br	PBBs	/	/	
PBDEs		/			
46	Pb		BL	/	Pass
	Cd		BL	/	
	Hg		BL	/	
	Cr	Cr(VI)	IN	N.D.	
	Br	PBBs	BL	/	
PBDEs		/			
47	Pb		BL	/	Pass
	Cd		BL	/	
	Hg		BL	/	
	Cr	Cr(VI)	BL	/	
	Br	PBBs	BL	/	
PBDEs		/			
48	Pb		BL	/	Pass
	Cd		BL	/	
	Hg		BL	/	
	Cr	Cr(VI)	BL	/	
	Br	PBBs	IN	N.D.	
PBDEs		N.D.			
49	Pb		BL	/	Pass
	Cd		BL	/	
	Hg		BL	/	
	Cr	Cr(VI)	BL	/	
	Br	PBBs	/	/	
PBDEs		/			
50	Pb		BL	/	Pass
	Cd		BL	/	
	Hg		BL	/	
	Cr	Cr(VI)	BL	/	
	Br	PBBs	/	/	
PBDEs		/			
51	Pb		BL	/	Pass
	Cd		BL	/	
	Hg		BL	/	
	Cr	Cr(VI)	BL	/	
	Br	PBBs	BL	/	
PBDEs		/			

52	Pb		BL	/	Pass
	Cd		BL	/	
	Hg		BL	/	
	Cr	Cr(VI)	BL	/	
	Br	PBBs	BL	/	
PBDEs		/			
53	Pb		BL	/	Pass
	Cd		BL	/	
	Hg		BL	/	
	Cr	Cr(VI)	BL	/	
	Br	PBBs	BL	/	
PBDEs		/			
54	Pb		BL	/	Pass
	Cd		BL	/	
	Hg		BL	/	
	Cr	Cr(VI)	BL	/	
	Br	PBBs	BL	/	
PBDEs		/			
55	Pb		BL	/	Pass
	Cd		BL	/	
	Hg		BL	/	
	Cr	Cr(VI)	BL	/	
	Br	PBBs	BL	/	
PBDEs		/			
56	Pb		BL	/	Pass
	Cd		BL	/	
	Hg		BL	/	
	Cr	Cr(VI)	BL	/	
	Br	PBBs	/	/	
PBDEs		/			
57	Pb		BL	/	Pass
	Cd		BL	/	
	Hg		BL	/	
	Cr	Cr(VI)	BL	/	
	Br	PBBs	BL	/	
PBDEs		/			
58	Pb		BL	/	Pass
	Cd		BL	/	
	Hg		BL	/	
	Cr	Cr(VI)	BL	/	
	Br	PBBs	BL	/	
PBDEs		/			

59	Pb		BL	/	Pass
	Cd		BL	/	
	Hg		BL	/	
	Cr	Cr(VI)	BL	/	
	Br	PBBs	BL	/	
		PBDEs		/	
60	Pb		BL	/	Pass
	Cd		BL	/	
	Hg		BL	/	
	Cr	Cr(VI)	BL	/	
	Br	PBBs	/	/	
		PBDEs		/	

Bis-(2-ethylhexyl) Phthalate (DEHP), Benzyl butyl Phthalate (BBP), Dibutyl Phthalate (DBP) and Diisobutyl Phthalate(DIBP)

Test Items	Result(mg/kg)		
	1+2+4	6+12+14	15+16+17
Bis-(2-ethylhexyl) Phthalate (DEHP)	N.D.	N.D.	N.D.
Benzyl butyl Phthalate (BBP)	N.D.	N.D.	N.D.
Dibutyl Phthalate (DBP)	N.D.	N.D.	N.D.
Diisobutyl Phthalate(DIBP)	N.D.	N.D.	N.D.
Conclusion	Pass	Pass	Pass

Test Items	Result(mg/kg)		
	18+19+20	23+24+28	29+30+31
Bis-(2-ethylhexyl) Phthalate (DEHP)	N.D.	N.D.	N.D.
Benzyl butyl Phthalate (BBP)	N.D.	N.D.	N.D.
Dibutyl Phthalate (DBP)	N.D.	N.D.	N.D.
Diisobutyl Phthalate(DIBP)	N.D.	N.D.	N.D.
Conclusion	Pass	Pass	Pass

Test Items	Result(mg/kg)		
	32+34+35	37+40+42	43+44+46
Bis-(2-ethylhexyl) Phthalate (DEHP)	N.D.	N.D.	N.D.
Benzyl butyl Phthalate (BBP)	N.D.	N.D.	N.D.
Dibutyl Phthalate (DBP)	N.D.	N.D.	N.D.
Diisobutyl Phthalate(DIBP)	N.D.	N.D.	N.D.
Conclusion	Pass	Pass	Pass

Test Items	Result(mg/kg)		
	47+48+51	52+53+54	55+57+58
Bis-(2-ethylhexyl) Phthalate (DEHP)	N.D.	N.D.	N.D.
Benzyl butyl Phthalate (BBP)	N.D.	N.D.	N.D.
Dibutyl Phthalate (DBP)	N.D.	N.D.	N.D.
Diisobutyl Phthalate(DIBP)	N.D.	N.D.	N.D.
Conclusion	Pass	Pass	Pass

Test Items	Result(mg/kg)
	59
Bis-(2-ethylhexyl) Phthalate (DEHP)	N.D.
Benzyl butyl Phthalate (BBP)	N.D.
Dibutyl Phthalate (DBP)	N.D.
Diisobutyl Phthalate(DIBP)	N.D.
Conclusion	Pass

Note:

- 1.N.D. = Not Detected (<MDL)
 MDL = Method Detection Limit
 1 mg/kg = 1ppm =0.0001%
 /=Not Regulated or Not Applicable
2. BL = Below the XRF screening limit
 IN = Further chemical test will be conducted when the screening result inconclusive
 OL = Further chemical test will be conducted while the result is above the screening limit.
3. For metal samples, the sample is negative for Cr(VI), if the Cr(VI) concentration is less than 0.10 µg/cm², the coating is considered a non- Cr(VI) based coating;
 The sample is positive for Cr(VI), if the Cr(VI) concentration is greater than 0.13 µg/cm²,
 The sample coating is considered to contain Cr(VI);
 The result is considered to be inconclusive, the Cr(VI) concentration is between the 0.10 µg/cm² and 0.13 µg/cm², unavoidable coating variations may influence the determination.
 Because the storage condition and production date of the sample are not known, the test results of the sample of hexavalent chromium can only represent the state of hexavalent chromium in the samples tested.

Remark:

1. When conducting the test for PBBs&PBDEs, XRF was introduced to screen Br Exclusively; When conducting the test for Hexavalent Chromium, XRF was introduced to screen Chromium exclusively.
2. According to the client's statement , the material of the sample(s) comply with RoHS directive 2011/65/EU Annex III Exemption, Corresponding exemption clause:
 #1 6(c) Lead is exempted as copper alloy containing up to 4% lead by weight .

Test Method:

1. With reference to IEC 62321-1: 2013 Ed.1.0, IEC 62321-2:2021 Ed.2.0, IEC 62321-3-1:2013 Ed.1.0. XRF screening limits in mg/kg for regulated elements in various matrices.

Element	Limit of IEC 62321-3-1:2013 Ed.1.0 (mg/kg)		
	Polymers	Metals	Composite material
Pb	$BL \leq (700-3\sigma) < X$ $< (1300+3\sigma) \leq OL$	$BL \leq (700-3\sigma) < X$ $< (1300+3\sigma) \leq OL$	$BL \leq (500-3\sigma) < X$ $< (1500+3\sigma) \leq OL$
Cd	$BL \leq (70-3\sigma) < X <$ $(130+3\sigma) \leq OL$	$BL \leq (70-3\sigma) < X <$ $(130+3\sigma) \leq OL$	$LOD < X < (150+3\sigma)$ $\leq OL$
Hg	$BL \leq (700-3\sigma) < X$ $< (1300+3\sigma) \leq OL$	$BL \leq (700-3\sigma) < X$ $< (1300+3\sigma) \leq OL$	$BL \leq (500-3\sigma) < X$ $< (1500+3\sigma) \leq OL$
Cr	$BL \leq (700-3\sigma) < X$	$BL \leq (700-3\sigma) < X$	$BL \leq (500-3\sigma) < X$
Br	$BL \leq (300-3\sigma) < X$	/	$BL \leq (250-3\sigma) < X$

Note: BL= Below the XRF screening limit
 OL=Over the XRF screening limit
 X=The symbol "X" marks the region where further investigation is necessary.
 3σ =The reproducibility of analytical instruments
 LOD= Detection limit

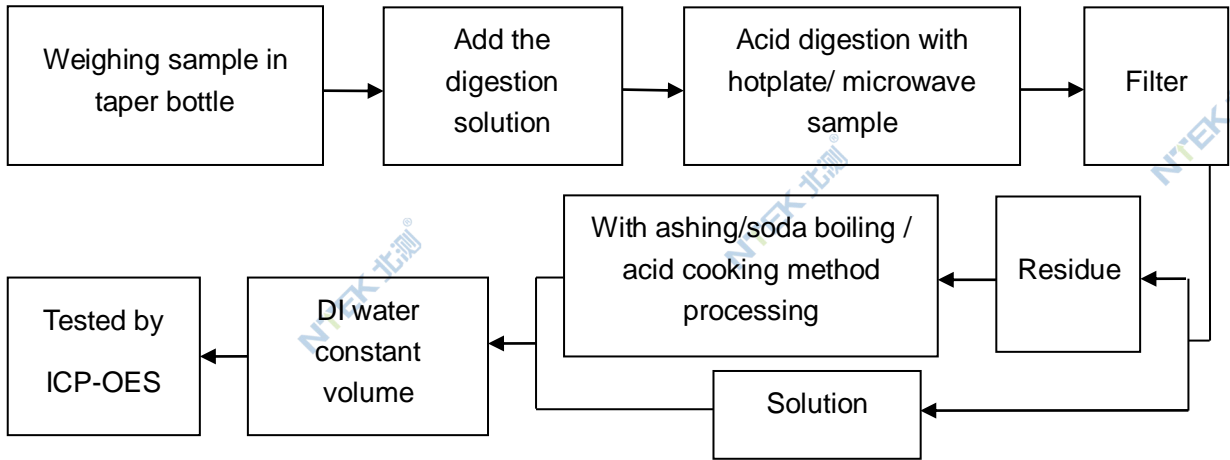
2. Chemical Test

Test item	Test method	Test instrument	MDL	Limit [△]
Lead (Pb)	IEC 62321-5:2013 Ed.1.0	ICP-OES	2 mg/kg	1000 mg/kg
Cadmium (Cd)	IEC 62321-5:2013 Ed.1.0	ICP-OES	2 mg/kg	100 mg/kg
Mercury (Hg)	IEC 62321-4:2013+AMD1:2017	ICP-OES	2 mg/kg	1000 mg/kg
Hexavalent Chromium(Cr(VI))	IEC 62321-7-1:2015 Ed.1.0	UV-Vis	0.10 µg/cm ²	1000 mg/kg
	IEC 62321-7-2:2017 Ed.1.0		8 mg/kg	
Polybrominated Biphenyls(PBBs)	IEC 62321-6:2015 Ed.1.0	GC-MS	5 mg/kg	1000 mg/kg
Polybrominated, Diphenyl Ethers(PBDEs)	IEC 62321-6:2015 Ed.1.0	GC-MS	5 mg/kg	1000 mg/kg
Bis-(2-ethylhexyl) Phthalate (DEHP)	IEC 62321-8:2017 Ed.1.0	GC-MS	30 mg/kg	1000 mg/kg
Benzyl butyl Phthalate (BBP)	IEC 62321-8:2017 Ed.1.0	GC-MS	30 mg/kg	1000 mg/kg
Dibutyl Phthalate (DBP)	IEC 62321-8:2017 Ed.1.0	GC-MS	30 mg/kg	1000 mg/kg
Diisobutyl Phthalate (DIBP)	IEC 62321-8:2017 Ed.1.0	GC-MS	30 mg/kg	1000 mg/kg

[△]The limit is quoted from RoHS Directive (EU) 2015/863 amending Annex II to Directive 2011/65/EU.

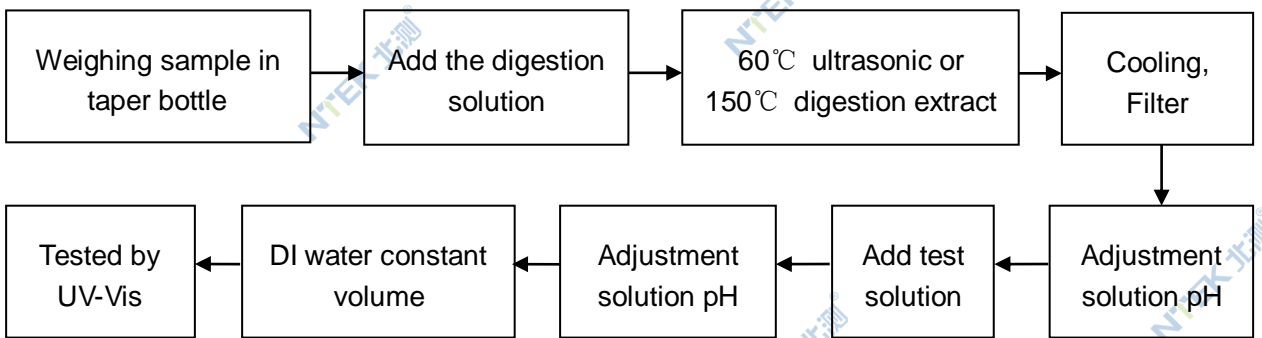
Test Flow:

1. Lead(Pb), Cadmium(Cd) , Mercury (Hg)

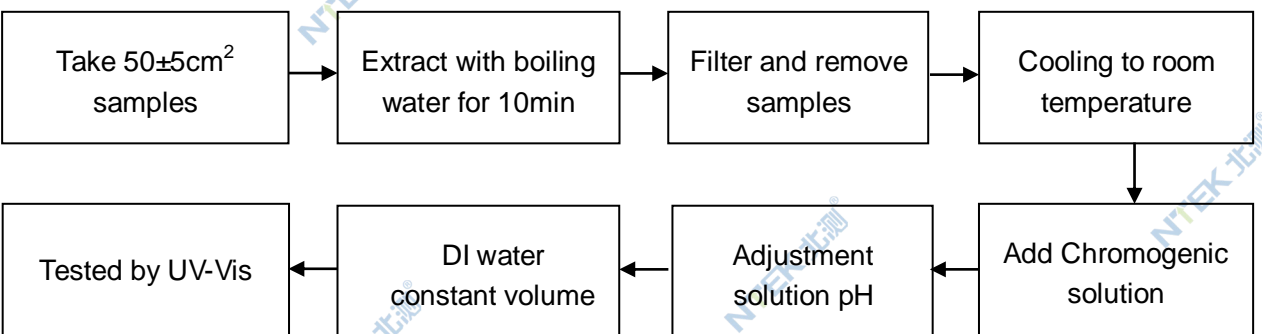


2. Hexavalent Chromium(Cr(VI))

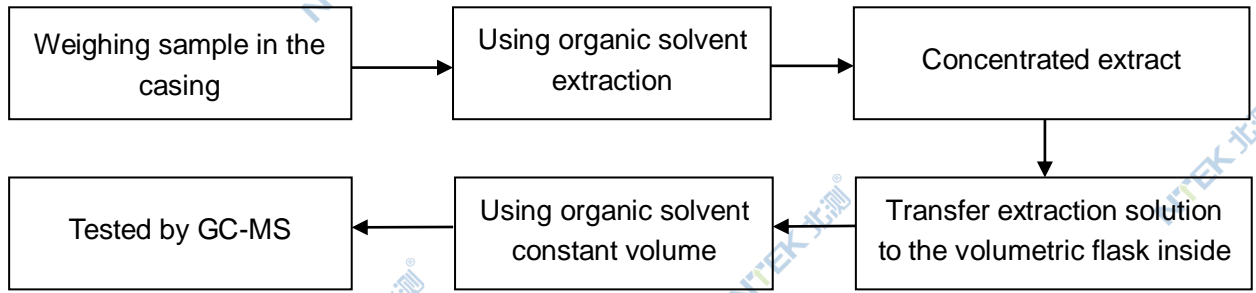
2.1 Non- metal sample(s)



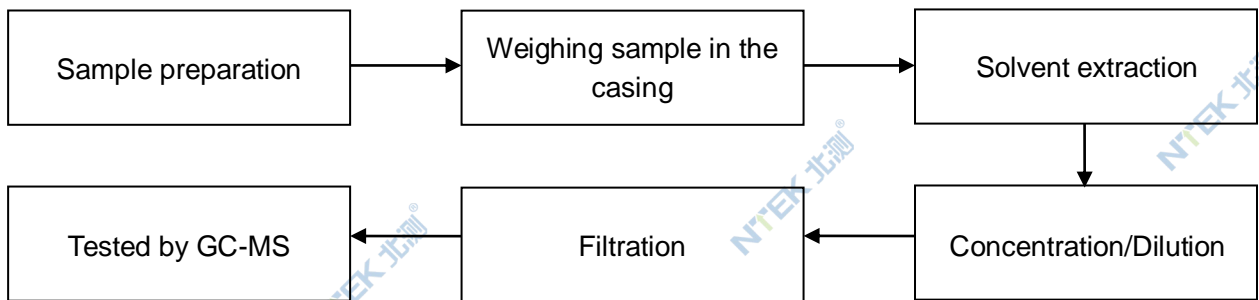
2.2 Metal sample(s)



3. PBBs/ PBDEs



4. Phthalates



Sample photo(s):



Fig.1 (Finished photo)



Fig.2 (Finished photo)

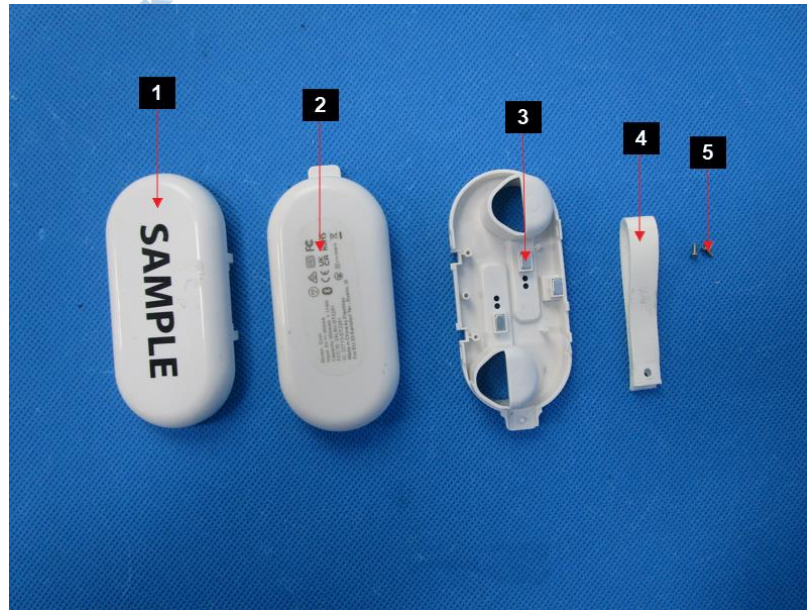


Fig.3

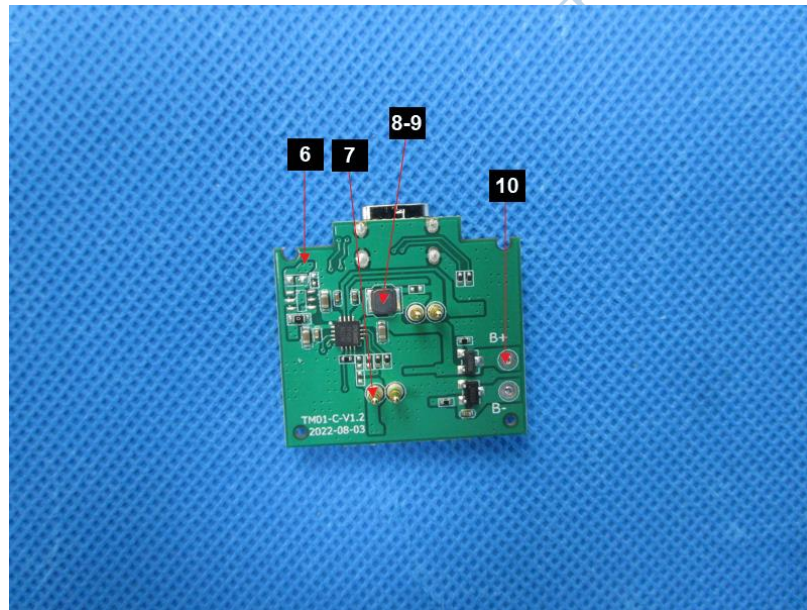


Fig.4

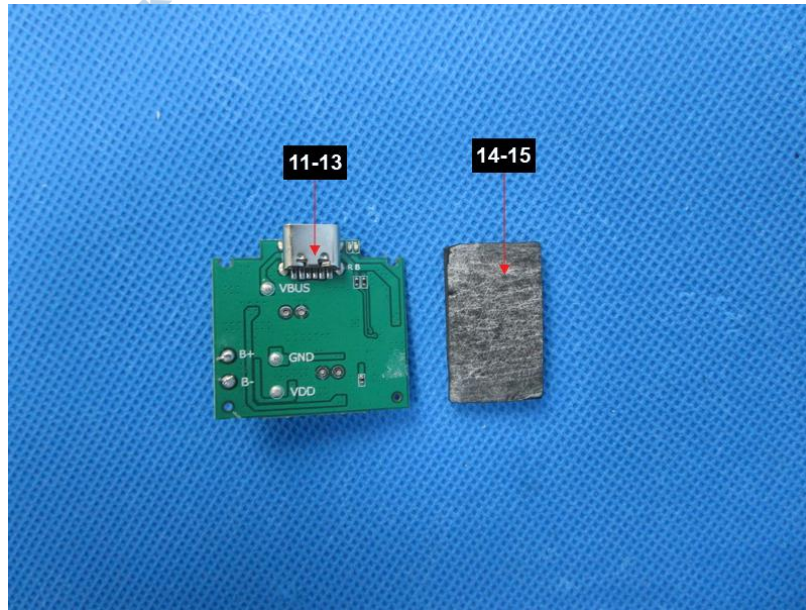


Fig.5

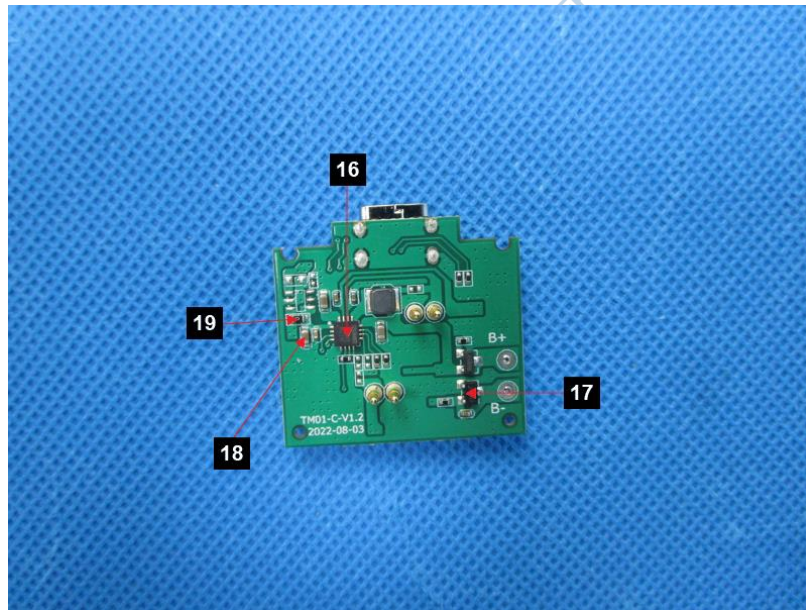


Fig.6

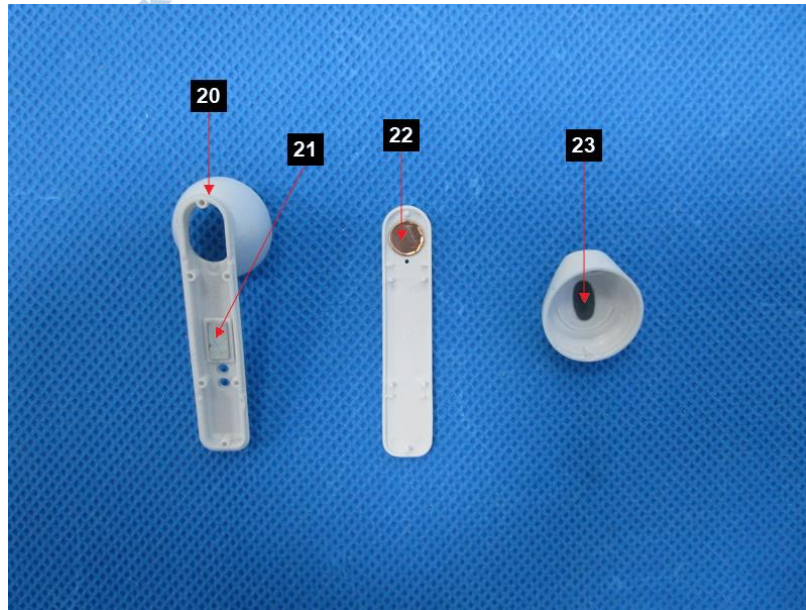


Fig.7

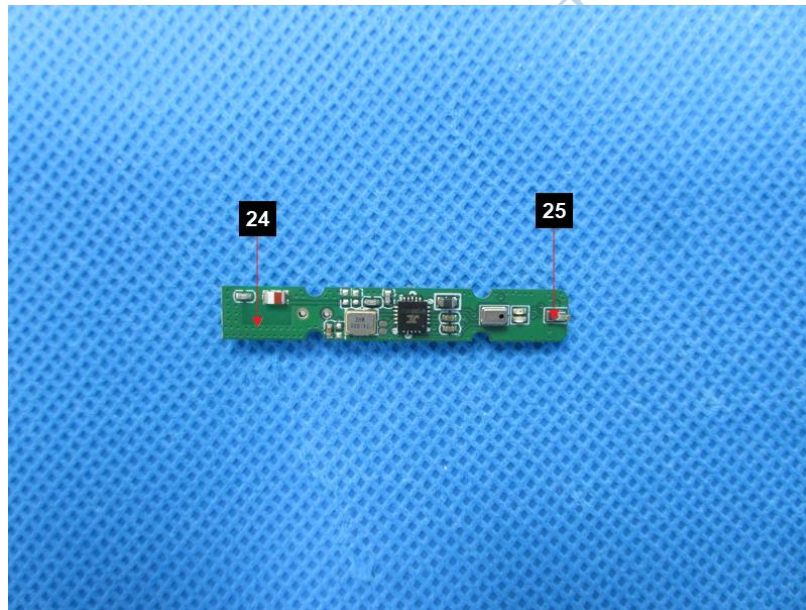


Fig.8

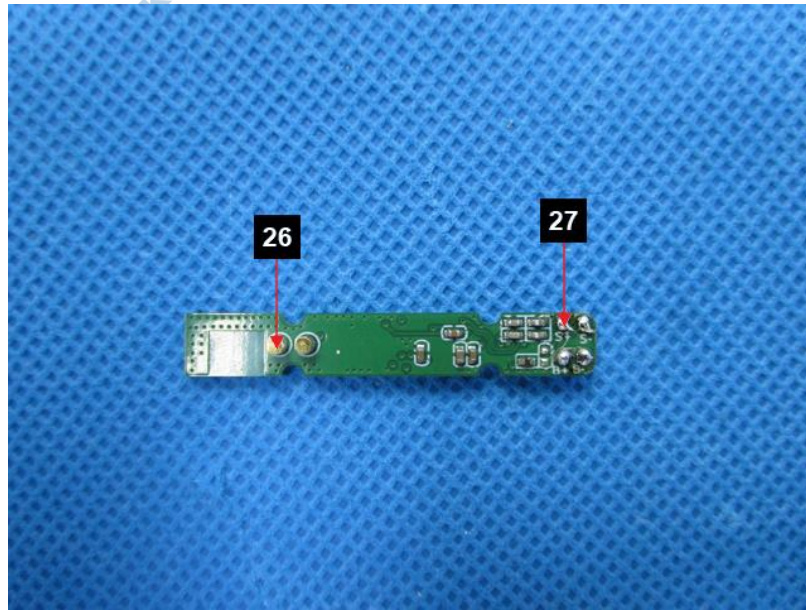


Fig.9

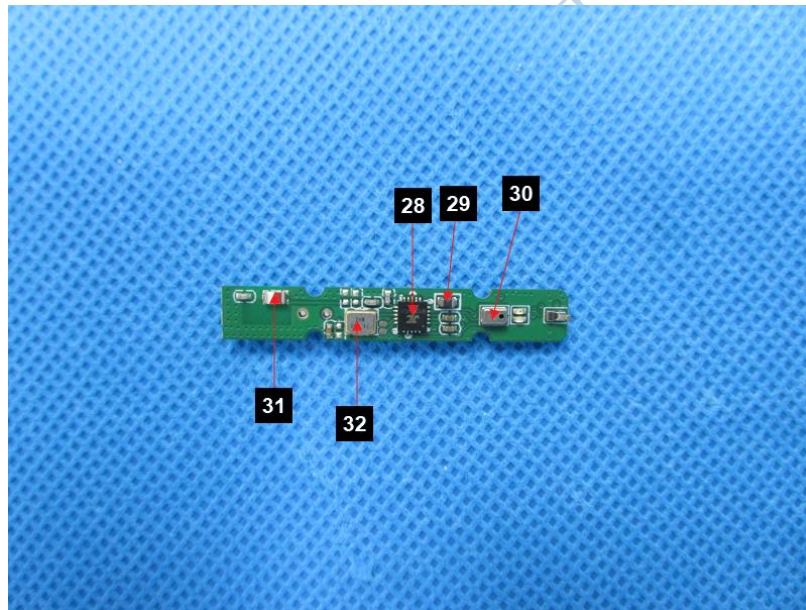


Fig.10

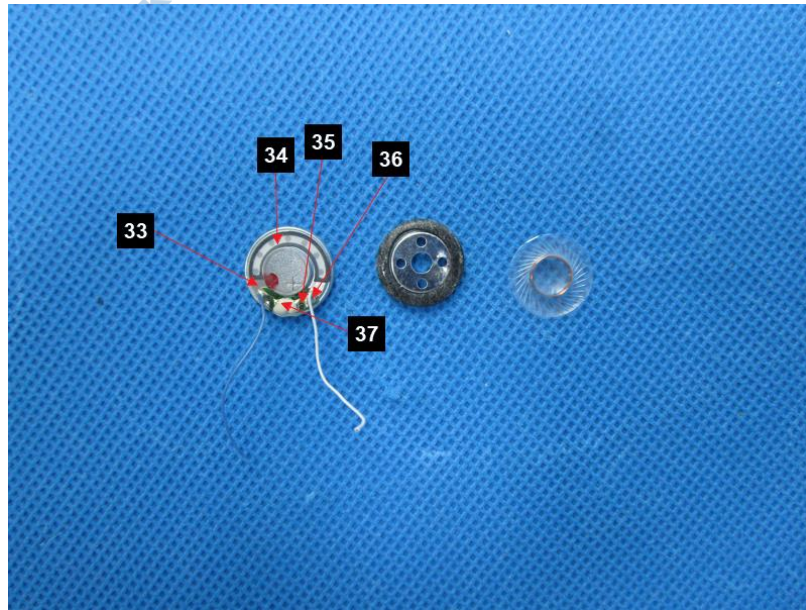


Fig.11

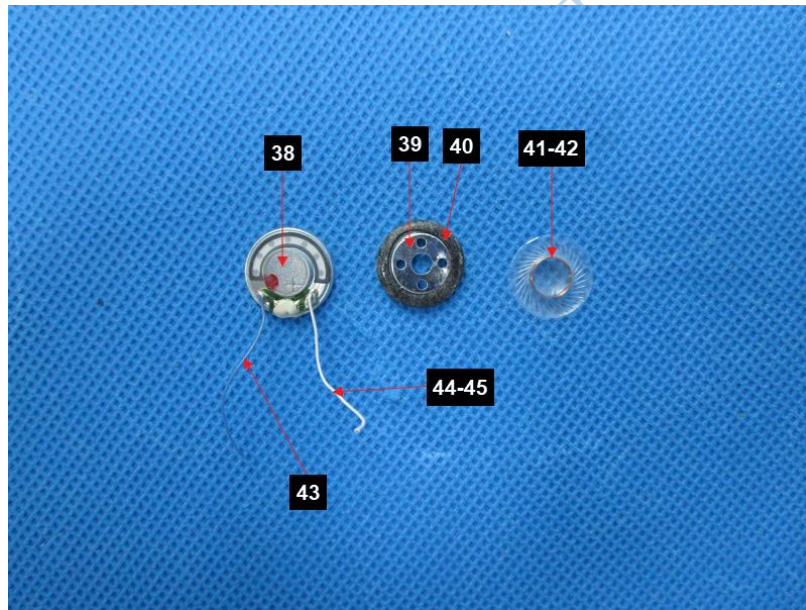


Fig.12

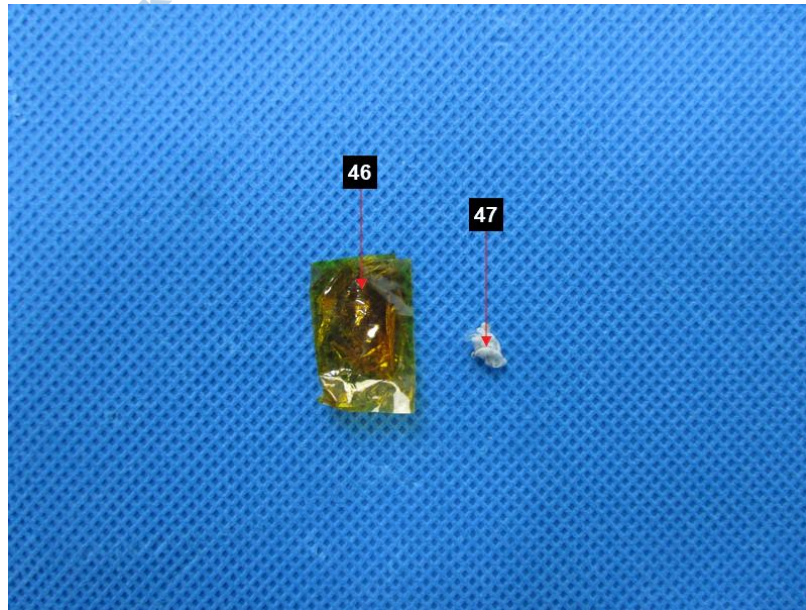


Fig.13

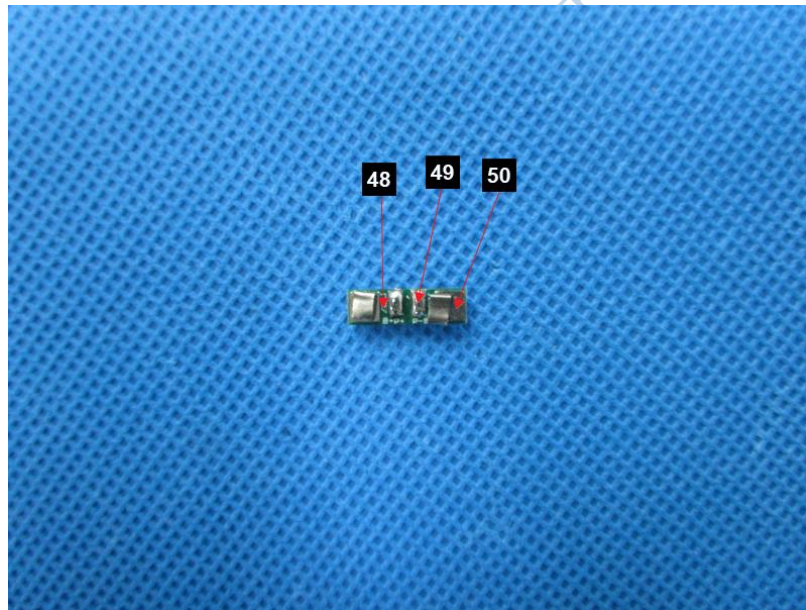


Fig.14

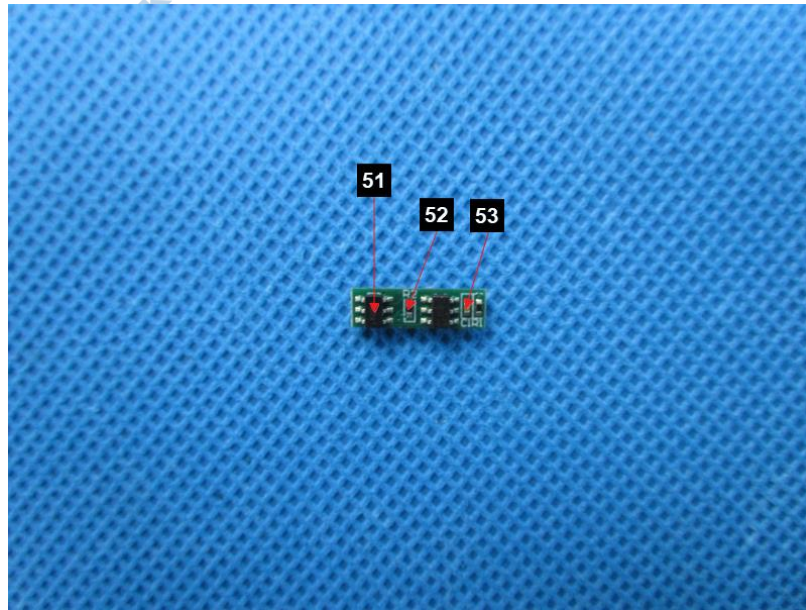


Fig.15

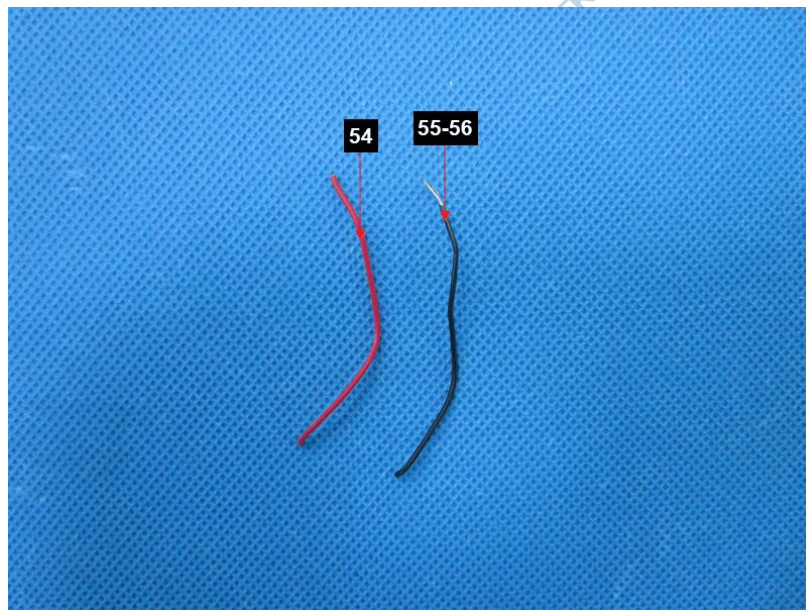


Fig.16



Fig.17

****End of Report****

The test results or data in this report will be used only for education, scientific research, enterprise product development and internal quality control or other purposes.

The test report is effective only with both signature and specialized stamp, The result(s) shown in this report refer only to the sample(s) tested. Without written approval of NTEK, this report can't be reproduced except in full.